

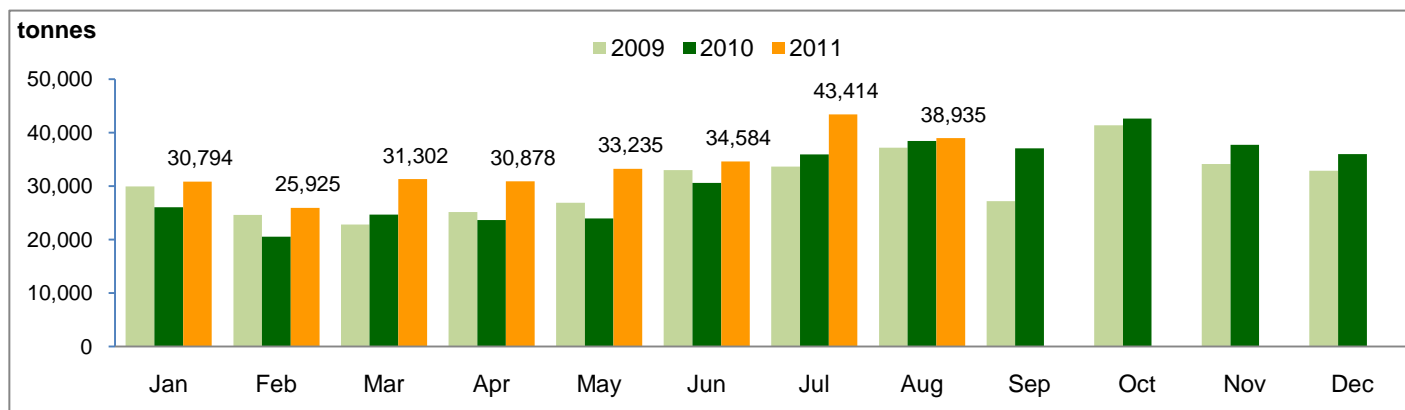


**Monthly Production Highlights – Aug 2011**

**Production and Yields**

		8M2011	8M2010	Change	Aug 2011	Aug 2010	Change
<b>Production</b>							
FFB Total	(tonnes)	1,132,703	943,193	20.1%	165,082	166,175	(0.7%)
Nucleus		1,030,247	863,461	19.3%	150,926	152,613	(1.1%)
Plasma		102,456	79,733	28.5%	14,156	13,562	4.4%
CPO	(tonnes)	269,067	223,617	20.3%	38,935	38,398	1.4%
PK	(tonnes)	61,432	50,242	22.3%	9,250	8,667	6.7%
<b>Efficiency</b>							
FFB Yield	(tonnes/ha)	13.2	12.0	↑	1.9	2.1	↓
CPO Yield	(tonnes/ha)	3.1	2.8	↑	0.4	0.5	↓
CPO Extraction Rate	(%)	23.5	23.6	↓	22.9	23.2	↓
PK Extraction Rate	(%)	5.4	5.3	↑	5.4	5.2	↑

**CPO Production Trend**



	Jan	Feb	Mar	Apr	May	Jun	Jul	Aug	Sep	Oct	Nov	Dec
<b>2010</b>	26,004	20,503	24,625	23,634	23,941	30,587	35,925	38,398	37,018	42,630	37,705	35,953
<b>2009</b>	29,920	24,579	22,786	25,127	26,861	32,990	33,645	37,185	27,193	41,367	34,106	32,874

**Notes:**

Figures may not sum due to rounding

FFB: Fresh Fruit Bunches

CPO: Crude Palm Oil

PK: Palm Kernel

Nucleus: Plantations owned by the Group

Plasma: Plantations developed by the Group for the benefit of smallholders. The Group buys FFB from these plasma plantations at prices determined by the Indonesian government.

Yields: FFB Yield and CPO Yield are for the reported period and not annualised