



# FIRST RESOURCES LIMITED

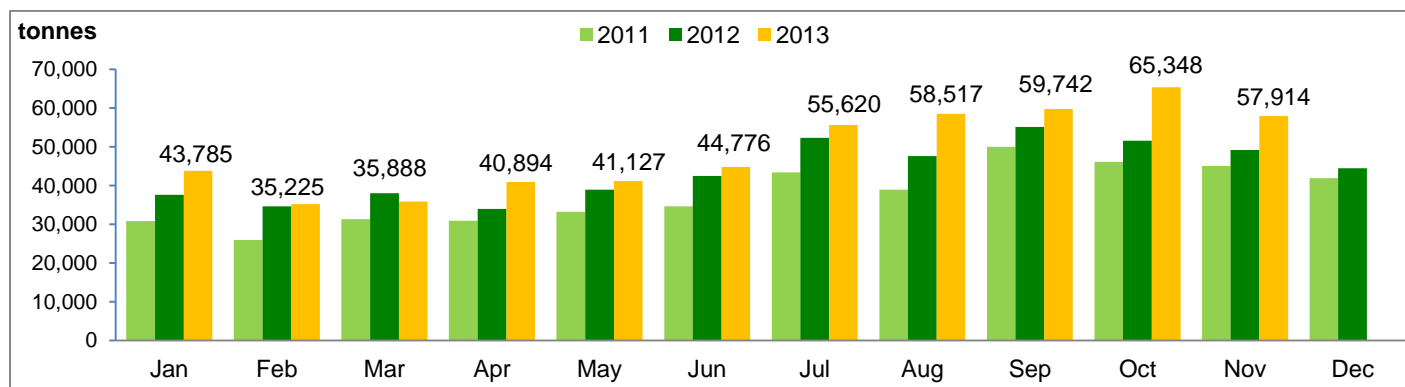
## Monthly Production Highlights – November 2013

### Production and Yields

		11M2013	11M2012	Change	Nov 2013	Nov 2012	Change
<b>Production</b>							
FFB harvested	(tonnes)	2,076,970	1,992,793	4.2%	215,143	199,620	7.8%
Nucleus		1,880,287	1,769,294	6.3%	195,364	175,704	11.2%
Plasma		196,683	223,499	(12.0%)	19,779	23,916	(17.3%)
FFB purchased	(tonnes)	259,821	75,704	243.2%	30,966	11,736	163.9%
CPO	(tonnes)	538,836	481,355	11.9%	57,914	49,179	17.8%
PK	(tonnes)	123,523	112,684	9.6%	13,136	11,509	14.1%
<b>Efficiency</b>							
FFB Yield	(tonnes/ha)	17.2	21.1	↓	1.8	2.1	↓
CPO Yield	(tonnes/ha)	4.0	4.9	↓	0.4	0.5	↓
CPO Extraction Rate	(%)	23.1	23.4	↓	23.3	23.3	-
PK Extraction Rate	(%)	5.3	5.5	↓	5.3	5.5	↓

Figures may not sum due to rounding.

### CPO Production Trend



	Jan	Feb	Mar	Apr	May	Jun	Jul	Aug	Sep	Oct	Nov	Dec
<b>2012</b>	37,569	34,586	38,013	33,938	38,950	42,480	52,341	47,630	55,123	51,546	49,179	44,476
<b>2011</b>	30,794	25,925	31,302	30,878	33,235	34,584	43,414	38,935	49,984	46,102	45,033	41,927

#### Notes:

2013 data includes contribution from PT Gerbang Sawit Indah and Lynhurst Investment Pte. Ltd., which were acquired in October 2012 and February 2013 respectively.

FFB: Fresh Fruit Bunches

CPO: Crude Palm Oil

PK: Palm Kernel

Nucleus: Plantations owned by the Group

Plasma: Plantations developed by the Group for the benefit of smallholders. The Group buys FFB from these plasma plantations at prices determined by the Indonesian government.

FFB purchased: FFB bought from third-party at market prices.

Yields: FFB Yield and CPO Yield are for the reported period and not annualised.